

SmartSystems™ Foundation



- Single, easy-to-use portal for hands-free device provisioning, deployment and management of Intermec devices
- Minimizes the effort spent on software upgrades, monitoring and trouble-shooting
- Centralized, easy, stand-alone operation, remote administration and license activation
- User-friendly mechanism for One-Step Provisioning of software bundles
- Scan-to-Connect barcodes enable single step connection to the network and software loading directly from FTP/HTTP sites
- Monitor and track Intermec data collection equipment
- Integrates with industry leading device and system management solutions

SmartSystems™ Foundation is an easy-to-use software platform that provides IT Administrators and Integrators a single, integrated portal for hands-free provisioning, deployment and management of Intermec devices minimizing the effort spent on software upgrades, equipment monitoring, maintenance and trouble-shooting.

Foundation provides a consistent way to manage Intermec devices including mobile computers, RFID readers, printers and bar code scanners, located on-site or remote, to make the most of limited IT resources, and lower the total cost of ownership for Intermec data collection equipment.

Intermec devices are packed with powerful features such as wireless communications, the latest Windows Mobile operating system, 802.1x security, Bluetooth® and extensive data collection support, all available when you take a device out of the box. Foundation provides easy access from one convenient location to the wide range of features integrated into Intermec equipment allowing customers to configure all of the settings for quick deployment.

Simplify Administration

An intuitive administrator's console provides centralized access to remote devices. Administrators can change device settings, configure OS upgrades, update software applications, and execute other

changes directly from the console to save time and significantly cut costs. Through One-Step Provisioning, these updates can be provisioned to multiple devices in a single-step via software bundles.

SmartSystems-enabled devices appear on the console, providing real-time visibility to device status and information. In addition, the built-in license manager enables easy license activation and management of Intermec software licenses.

Smart Provisioning

SmartSystems Foundation slashes time and expenses by making it easy to customize, upgrade and optimize your system. System administrators can adjust settings at their desktop and push them to devices in the field without ever handling the equipment. They can also create and save a "golden" configuration image, then use the image to restore device settings and solve field issues, or quickly load, configure and deploy a replacement device.

SmartSystems simplifies connecting a device to the network and associating it to a specific folder within the SmartSystems administrator console through a simple procedure called Scan-to-Connect. IT Administrators scan a customized set of barcodes to enable single step connection of supported devices to the network and into the SmartSystems folder. From there, a provisioning bundle associated with the

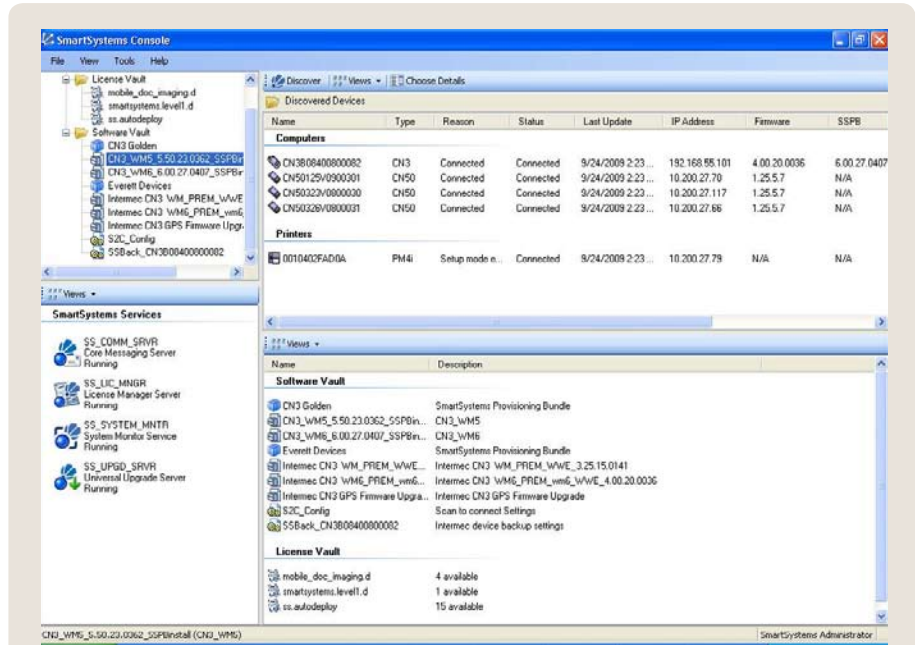
folder is deployed to the device without administrative interaction, saving time and effort.

Many SmartSystems-enabled devices feature the Intermec Ready-to-Work Indicator, a blue LED that gives users visual confirmation that the device is on the network and functioning properly.

SmartSystems Foundation complements and integrates with industry leading device management solutions including Wavelink Avalanche™ and SOTI MobiControl, adding the ability to manage the unique Intermec device features and settings from within a single enterprise device management system.

System Requirements

SmartSystems Foundation can be installed on a PC running Windows XP Professional, Windows Vista, Windows Server 2003 or Windows Server 2008. SmartSystems-enabled products from Intermec, such as the popular CN3 and the recently introduced CN4 and CN50, are discovered by Foundation as soon as they are placed on the network. Devices do not have to be on the same subnet as the Foundation.



SmartSystems™ Foundation Console

- Discover devices and applications as they connect to the network
- Display connection level status and device state
- View device information including device type, device ID, and other resource information
- Configure device settings remotely
- Upgrade individual devices by dragging and dropping software or configuration settings onto device

North America

Corporate Headquarters
6001 36th Avenue West
Everett, Washington 98203
Phone: (425) 348-2600
Fax: (425) 355-9551

North Latin America

Headquarters Office
Mexico
Phone: +52 55 52-41-48-00
Fax: +52 55 52-11-81-21

South Latin America

Headquarters Office
Brazil
Phone: +55 11 5502.6770
Fax: +55 11 5502.6780

Europe/Middle East & Africa

Headquarters Office
Reading, United Kingdom
Phone: +44 118 923 0800
Fax: +44 118 923 0801

Asia Pacific

Headquarters Office
Singapore
Phone: +65 6303 2100
Fax: +65 6303 2199

Internet

www.intermec.com
Worldwide Locations:
www.intermec.com/locations

Sales

Toll Free NA: (800) 934-3163
Toll in NA: (425) 348-2726
Freephone ROW:
00 800 4488 8844
Toll ROW: +44 134 435 0296

OEM Sales

Phone: (425) 348-2762

Media Sales

Phone: (513) 874-5882

Customer Service and Support

Toll Free NA: (800) 755-5505
Toll in NA: (425) 356-1799

Copyright © 2009 Intermec Technologies Corporation. All rights reserved. Intermec is a registered trademark of Intermec Technologies Corporation. All other trademarks are the property of their respective owners. Printed in the U.S.A. 611673-01B 10/09

In a continuing effort to improve our products, Intermec Technologies Corporation reserves the right to change specifications and features without prior notice.

